

# Discharge Measurement Summary

**Site name** Sodhouse  
**Site number** 06  
**Operator(s)** TMiller  
**File name** Sodhouse\_20230512-143159.ft  
**Comment**

<b>Start time</b>	5/12/2023 1:43 PM	<b>Sensor type</b>	Top Setting
<b>End time</b>	5/12/2023 2:29 PM	<b>Handheld serial number</b>	FT2H2219029
<b>Start location latitude</b>	43.250	<b>Probe serial number</b>	FT2P2219014
<b>Start location longitude</b>	-118.859	<b>Probe firmware</b>	1.30
<b>Calculations engine</b>	FlowTracker2	<b>Handheld software</b>	1.7

<b># Stations</b>	<b>Avg interval (s)</b>	<b>Total discharge (m<sup>3</sup>/s)</b>
21	40	0.4248

<b>Total width (m)</b>	<b>Total area (m<sup>2</sup>)</b>	<b>Wetted Perimeter (m)</b>
3.932	2.07880	4.409

<b>Mean SNR (dB)</b>	<b>Mean depth (m)</b>	<b>Mean velocity (m/s)</b>
52	0.529	0.2044

<b>Mean temp (°C)</b>	<b>Max depth (m)</b>	<b>Max velocity (m/s)</b>
14.443	0.829	0.3192

Discharge Uncertainty		
Category	ISO	IVE
Accuracy	1.0%	1.0%
Depth	0.1%	1.1%
Velocity	0.4%	3.2%
Width	0.1%	0.1%
Method	1.0%	
# Stations	2.4%	
Overall	2.8%	3.6%

<b>Discharge equation</b>	Mid Section
<b>Discharge uncertainty</b>	IVE
<b>Discharge reference</b>	Rated

Data Collection Settings	
<b>Salinity</b>	0.000 PSS-78
<b>Temperature</b>	-
<b>Sound speed</b>	-
<b>Mounting correction</b>	0.000 %

## Summary overview

No changes were made to this file  
Quality control warnings



# Discharge Measurement Summary

**Site name** Sodhouse  
**Site number** 06  
**Operator(s)** TMiller  
**File name** Sodhouse\_20230512-143159.ft  
**Comment**

## Station Warning Settings

**Station discharge OK**

Station discharge < 5.00%

**Station discharge caution**

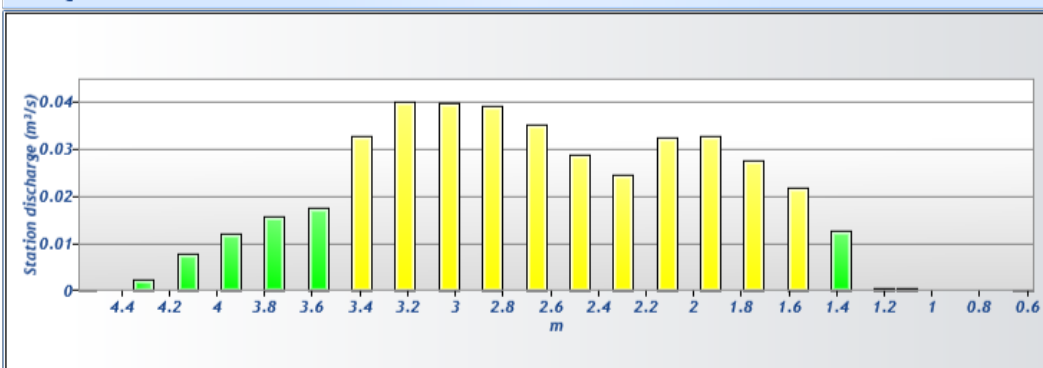
5.00% >= Station discharge < 10.00%

**Station discharge warning**

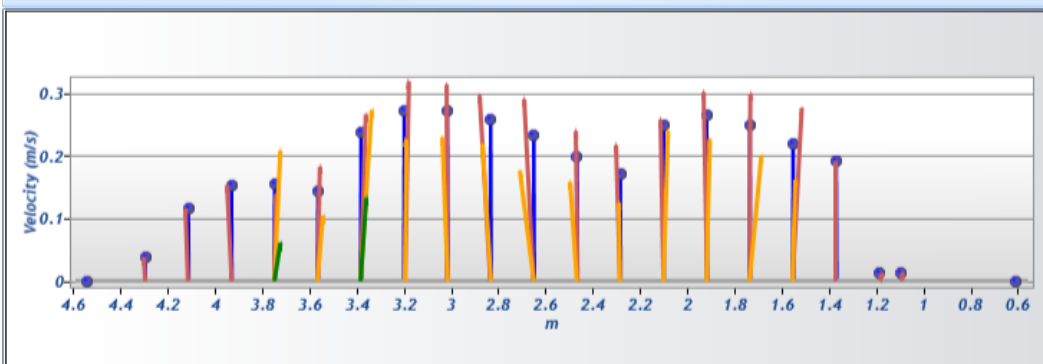
Station discharge >= 10.00%



Discharge chart

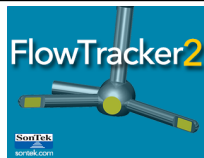


Velocity chart



Depth chart

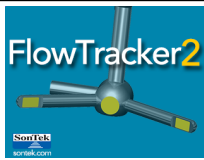




# Discharge Measurement Summary

**Site name** Sodhouse  
**Site number** 06  
**Operator(s)** TMiller  
**File name** Sodhouse\_20230512-143159.ft  
**Comment**

Measurement results													
St#	Time	Location (m)	Method	Depth (m)	%Depth	Measured Depth (m)	Samples	Velocity (m/s)	Correcti on	Mean Velocity (m/s)	Area (m <sup>2</sup> )	Flow (m <sup>3</sup> /s)	%Q
0	1:43 PM	0.610	None	0.000	0.0000	0.000	0	0.0000	1.0000	0.0141	0.00000	0.0000	0.00
1	1:43 PM	1.097	0.6	0.177	0.6000	0.106	80	0.0141	1.0000	0.0141	0.05119	0.0007	0.17
2	1:46 PM	1.189	0.6	0.274	0.6000	0.165	80	0.0124	1.0000	0.0124	0.03763	0.0005	0.11
3	1:48 PM	1.372	0.6	0.366	0.6000	0.219	80	0.1907	1.0000	0.1907	0.06689	0.0128	3.00
4	1:49 PM	1.554	0.2/0.8	0.543	0.2000	0.109	80	0.2766	1.0000	0.2195	0.09922	0.0218	5.13
4	1:49 PM	1.554	0.2/0.8	0.543	0.8000	0.434	80	0.1624	1.0000	0.2195	0.09922	0.0218	5.13
5	1:52 PM	1.737	0.2/0.8	0.607	0.2000	0.121	80	0.2993	1.0000	0.2495	0.11093	0.0277	6.51
5	1:52 PM	1.737	0.2/0.8	0.607	0.8000	0.485	80	0.1997	1.0000	0.2495	0.11093	0.0277	6.51
6	1:55 PM	1.920	0.2/0.8	0.677	0.2000	0.135	80	0.3018	1.0000	0.2644	0.12375	0.0327	7.70
6	1:55 PM	1.920	0.2/0.8	0.677	0.8000	0.541	80	0.2271	1.0000	0.2644	0.12375	0.0327	7.70
7	1:58 PM	2.103	0.2/0.8	0.716	0.2000	0.143	80	0.2579	1.0000	0.2489	0.13099	0.0326	7.68
7	1:58 PM	2.103	0.2/0.8	0.716	0.8000	0.573	80	0.2400	1.0000	0.2489	0.13099	0.0326	7.68
8	2:00 PM	2.286	0.2/0.8	0.780	0.2000	0.156	80	0.2175	1.0000	0.1715	0.14270	0.0245	5.76
8	2:00 PM	2.286	0.2/0.8	0.780	0.8000	0.624	80	0.1254	1.0000	0.1715	0.14270	0.0245	5.76
9	2:02 PM	2.469	0.2/0.8	0.792	0.2000	0.158	80	0.2401	1.0000	0.1993	0.14493	0.0289	6.80
9	2:02 PM	2.469	0.2/0.8	0.792	0.8000	0.634	80	0.1585	1.0000	0.1993	0.14493	0.0289	6.80
10	2:05 PM	2.652	0.2/0.8	0.826	0.2000	0.165	80	0.2905	1.0000	0.2335	0.15106	0.0353	8.30
10	2:05 PM	2.652	0.2/0.8	0.826	0.8000	0.661	80	0.1765	1.0000	0.2335	0.15106	0.0353	8.30
11	2:07 PM	2.835	0.2/0.8	0.829	0.2000	0.166	80	0.2964	1.0000	0.2578	0.15162	0.0391	9.20
11	2:07 PM	2.835	0.2/0.8	0.829	0.8000	0.663	80	0.2192	1.0000	0.2578	0.15162	0.0391	9.20
12	2:10 PM	3.018	0.2/0.8	0.802	0.2000	0.160	80	0.3140	1.0000	0.2720	0.14660	0.0399	9.39
12	2:10 PM	3.018	0.2/0.8	0.802	0.8000	0.641	80	0.2300	1.0000	0.2720	0.14660	0.0399	9.39
13	2:12 PM	3.200	0.2/0.8	0.802	0.2000	0.160	80	0.3192	1.0000	0.2727	0.14660	0.0400	9.41
13	2:12 PM	3.200	0.2/0.8	0.802	0.8000	0.641	80	0.2262	1.0000	0.2727	0.14660	0.0400	9.41
14	2:15 PM	3.383	0.2/0.6/0.8	0.756	0.2000	0.151	80	0.2666	1.0000	0.2365	0.13824	0.0327	7.70
14	2:15 PM	3.383	0.2/0.6/0.8	0.756	0.6000	0.454	80	0.2733	1.0000	0.2365	0.13824	0.0327	7.70
14	2:15 PM	3.383	0.2/0.6/0.8	0.756	0.8000	0.605	80	0.1329	1.0000	0.2365	0.13824	0.0327	7.70
15	2:18 PM	3.566	0.2/0.8	0.671	0.2000	0.134	80	0.1827	1.0000	0.1438	0.12263	0.0176	4.15
15	2:18 PM	3.566	0.2/0.8	0.671	0.8000	0.536	80	0.1049	1.0000	0.1438	0.12263	0.0176	4.15
16	2:21 PM	3.749	0.2/0.6/0.8	0.555	0.2000	0.111	80	0.1393	1.0000	0.1544	0.10145	0.0157	3.69
16	2:21 PM	3.749	0.2/0.6/0.8	0.555	0.6000	0.333	80	0.2084	1.0000	0.1544	0.10145	0.0157	3.69
16	2:21 PM	3.749	0.2/0.6/0.8	0.555	0.8000	0.444	80	0.0617	1.0000	0.1544	0.10145	0.0157	3.69
17	2:24 PM	3.932	0.6	0.433	0.6000	0.260	80	0.1539	1.0000	0.1539	0.07915	0.0122	2.87
18	2:26 PM	4.115	0.6	0.366	0.6000	0.219	80	0.1162	1.0000	0.1162	0.06689	0.0078	1.83
19	2:28 PM	4.298	0.6	0.311	0.6000	0.187	80	0.0385	1.0000	0.0385	0.06633	0.0026	0.60
20	2:29 PM	4.542	None	0.000	0.0000	0.000	0	0.0000		0.0385	0.00000	0.0000	0.00

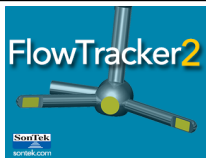


# Discharge Measurement Summary

**Site name** Sodhouse  
**Site number** 06  
**Operator(s)** TMiller  
**File name** Sodhouse\_20230512-143159.ft  
**Comment**

Quality Control Settings	
Maximum depth change	50.00%
Maximum spacing change	100.00%
SNR threshold	10 dB
Standard error threshold	0.0100 m/s
Spike threshold	10.00%
Maximum velocity angle	20.0 deg
Maximum tilt angle	5.0 deg

Quality control warnings							
St#	Time	Location (m)	Method	Depth (m)	%Depth	Measured Depth (m)	Warnings
15	2:18 PM	3.566	0.2/0.8	0.671	0.2000	0.134	Boundary Interference,Standard Error > QC
15	2:18 PM	3.566	0.2/0.8	0.671	0.8000	0.536	Boundary Interference,Standard Error > QC
16	2:21 PM	3.749	0.2/0.6/0.8	0.555	0.2000	0.111	Velocity Angle > QC
16	2:21 PM	3.749	0.2/0.6/0.8	0.555	0.6000	0.333	Velocity Angle > QC
16	2:21 PM	3.749	0.2/0.6/0.8	0.555	0.8000	0.444	Velocity Angle > QC
20	2:29 PM	4.542	None	0.000	0.0000	0.000	Water Depth > QC



# Discharge Measurement Summary

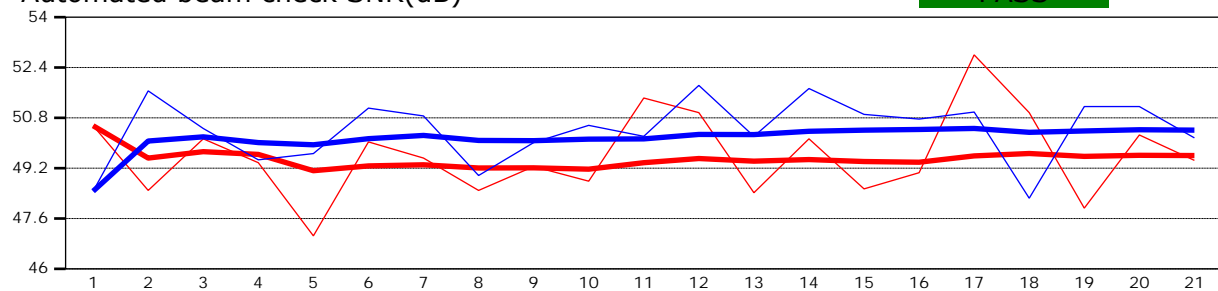
**Site name** Sodhouse  
**Site number** 06  
**Operator(s)** TMiller  
**File name** Sodhouse\_20230512-143159.ft  
**Comment**

<b>Beam 1</b>	
<b>Beam 2</b>	

Automated beam check Start time 5/12/2023 1:43:11 PM

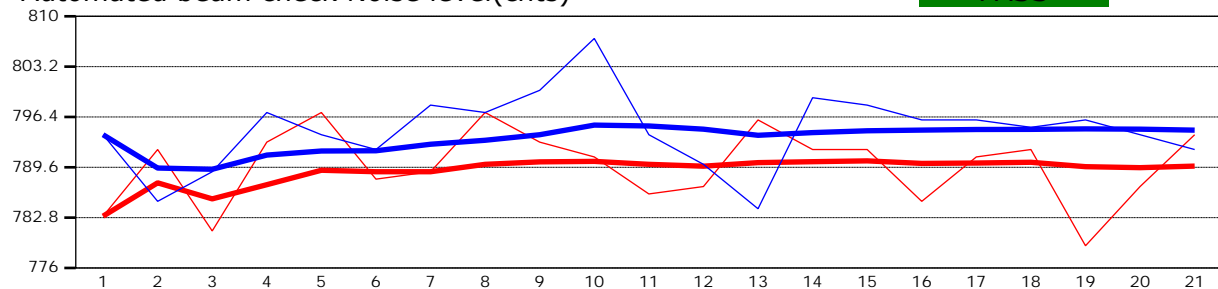
Automated beam check SNR(dB)

PASS



Automated beam check Noise level(cnts)

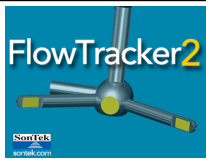
PASS



## Automated beam check Quality control warnings

No quality control warnings

9/27/2024 8:15:11 AM



# Discharge Measurement Summary

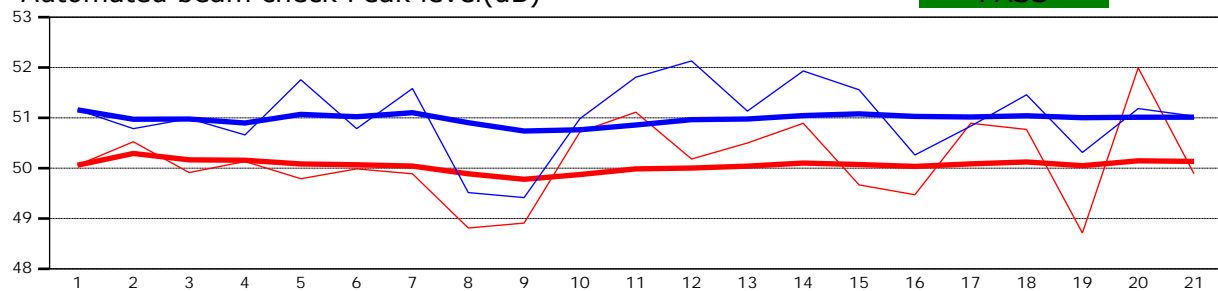
**Site name** Sodhouse  
**Site number** 06  
**Operator(s)** TMiller  
**File name** Sodhouse\_20230512-143159.ft  
**Comment**

<b>Beam 1</b>	
<b>Beam 2</b>	

Automated beam check Start time 5/12/2023 1:43:11 PM

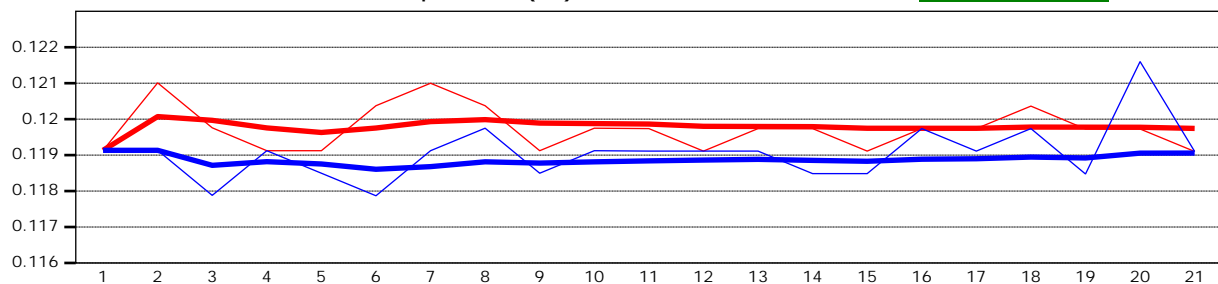
Automated beam check Peak level(dB)

PASS



Automated beam check Peak position(m)

PASS



## Automated beam check Quality control warnings

No quality control warnings